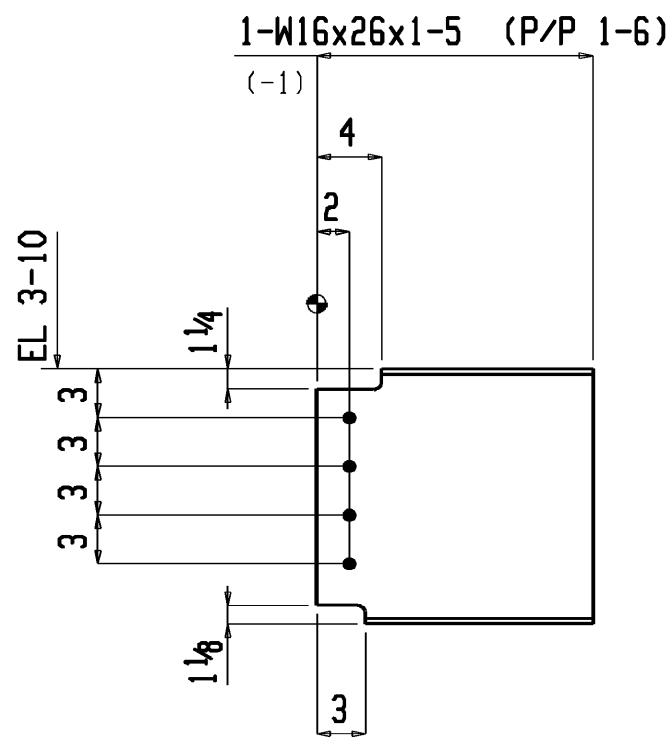
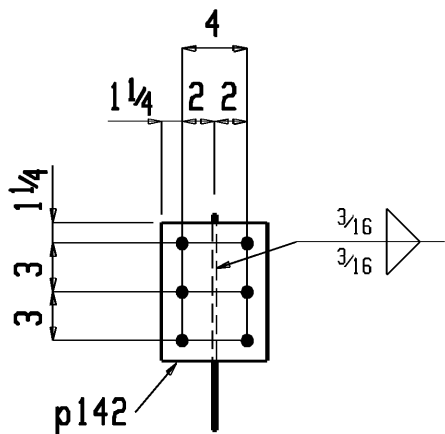


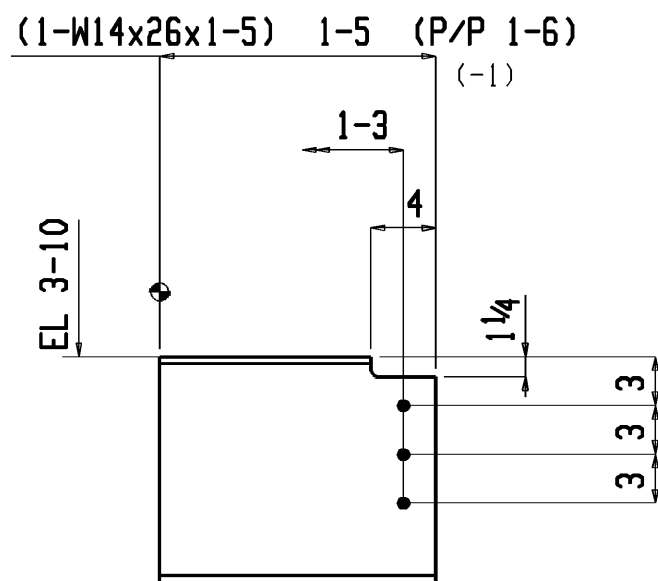
ONE BEAM 7B1

W 15 1 1/16 x 1/4
F 5 1/2 x 3/8
K 1 1/16 x 13/16



ONE BEAM 7B2

W 15 1 1/16 x 1/4
F 5 1/2 x 3/8
K 1 1/16 x 13/16



ONE BEAM 7B3


W 13 7/8 x 1/4
F 5 x 7/16
K 1 1/8 x 13/16

SHOP NOTES:
1)  INDICATES SPOT OF PAINT

SHOP BILL OF MATERIAL Total weight : 105

SEQ NO	SEQ QUAN	MARK	QUAN	ITEM	LENGTH	WEIGHT	GRADE	REMARKS	PR
1	1	7B1	ONE	BEAM		39			
		7B1	1	W16x26	1	5 7/16	33	A992	51E
		p142	1	PL 3/8 x 6 1/2	0	8 1/2	6	A36	
				FIELD BOLTS					
			6	TC 3/4 Dia F1852	0	2		1HD WASH	
1	1	7B2	ONE	BEAM		32			
		7B2	1	W16x26	1	5	32	A992	
				FIELD BOLTS					
			4	TC 3/4 Dia F1852	0	2		1HD WASH	
1	1	7B3	ONE	BEAM		34			
		7B3	1	W14x26	1	5	34	A992	
				FIELD BOLTS					
			3	TC 3/4 Dia F1852	0	2		1HD WASH	

REF.DWG. =SEE B.O.M.

SURFACE PREPARATION: NONE	OPEN HOLES 13/16 Ø U/N							AMERICAN INSTITUTE OF STEEL CONSTRUCTION PROJECT: STRUCTURAL STEEL TEACHING SCULPTURE	 DOUGLAS STEEL FABRICATING CORPORATION rsteffens
SHOP PAINT: NONE	ALL MAT'L A36 U/N							CUSTOMER: AMERICAN INSTITUTE OF STEEL CONSTRUCTION	
								DRAWN RAS 07/2010 SHOP ORDER XXXX	
	WELD = E70XX ELECTRODE	NO.	REVISION	CODE	BY	DATE	CHECKED CT	SHEET NO. 7	